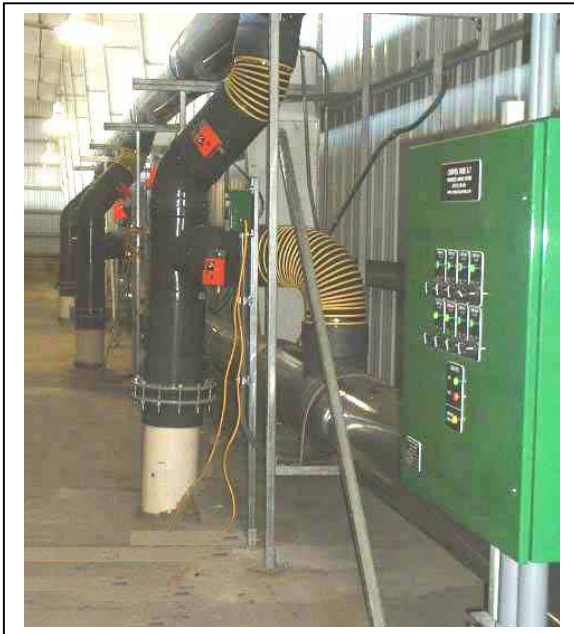


Aerated Static Pile

Automated Control of Aerated Slab Biosolids Composting

CUSTOMER PROFILE

Port Angeles, Washington—Biosolids Composting Facility



CLIENT NEEDS

The City of Port Angeles' Aerated Static Pile facility was no longer in working order and needed an upgrade to compost their biosolids. The City issued an RFP for a new Aeration Control and Monitoring System, capable of composting 260 dry tons of biosolids per year, combined with yard wastes.

The City required:

- Equipment appropriate for their existing facility;
- Automated aeration control and documentation for PFRP and VAR;
- In-slab aeration compatible with front end loaders; and,
- On-going technical support and periodic training for employees.

THE SOLUTION

ECS was awarded the contract providing a new Aeration Control and Monitoring System (CompTroller™) and in-slab aeration trenches for a six-zone ASP (installed three zones at a time in two phases). Each zone is 25 ft by 50 ft long and is bordered on three sides by “ecology” block walls.

The ECS CompTroller™ constantly monitors temperature from temperature probes located near the top and bottom of the compost pile. It automatically controls both the volume and the direction of aeration and maintains uniform operator-selected temperatures. In-slab aeration trenches provide even air distribution through out the biomass—and provide leachate collection.

